



THURSDAY, MARCH 4, 2021 --- 1 P.M. CST.

DEJONG RANCH

53RD ANNUAL GOLDEN PLUS SALE
KIMBALL LIVESTOCK EXCHANGE, KIMBALL SD

Dear Cattlemen,

We welcome and thank you for taking the time to evaluate our 53rd annual sale offering. We are striving to bring a stronger set of bulls and females for your inspection each year, focusing on multi-trait selection. Through the use of nearly 60 years of AI and 30 years of ET, we work to supply cutting edge genetics raised in commercial conditions to provide affordable breeding stock with the quality and ability to perform, show and make a profit.

Opinions abound about breeds of cattle and every breed has some great cattle to offer. There is only one thing in the cattle industry that is free – Heterosis. Heterosis or Hybrid Vigor has been time tested and proven to be a common phenomenon displaying offspring performance exceeding the average performance of the parent breeds. Adding pounds, improving carcass cutability or increasing fertility rates are ways to increase profitability. As herds become more and more dominated by one breed, opportunity grows to inject another breed and realize the Heterosis advantage without increasing cost.

We are very thankful for the people we have been privileged to meet and work with in the past and look forward to meeting in the future. We are fortunate and indebted to previous generations and the grace of God to be involved in production agriculture and believe there is no better place to raise families.

Wyatt & Zana DeJong
44090 375th Rd
Ravena NE 68869
Cell 605-842-5683
dejongranch.wyatt@gmail.com

Miles & Kim DeJong
31842 DeJong Rd
Kennebec SD 57544
Home 605-869-2329
Cell 605-222-1292

Kevin & Katrin Van Zandbergen
31843 DeJong Rd
Kennebec SD 57544
Home 605-869-2362
Cell 605-220-9646



Sale Terms & Conditions

Please feel free to call us anytime to visit about the bulls in the offering, or to set up an appointment to view the bulls in person at the ranch. The bulls will be available at the sale

location in Kimball beginning Wed. March 3

Miles Home: (605)-869-2329 Cell: (605)-222-1292

Kevin Home: (605)-869-2362 Cell: (605)-220-9646

Wyatt Cell: (605)-842-5683

All bulls are free of known genetic defects by test or parentage.

We are retaining an in-herd semen interest in all bulls at sellers expense and buyers convenience.

All bull info in **Red are yearlings
All bull info in **Blue** are 18 month olds**

Sale Location:

301 Truck St.

Kimball SD 57355

Hotels

Westwood Inn & Suites.....(605) 778-6088

Dakota Winds.....(605) 778-6215

Auctioneer: Chisum Peterson.....(605) 730-4214

Industry Personnel:

Blake Nelson.....AMAA.....(918) 441-3433

Josh Cribbs.....AMAA.....(813) 967-6949

Jeff Kapperman..Tri State Neighbor.....(605) 940-5104

Jim Scheel.....Cattle Business Weekly.... ..(606) 545-1521

Dennise Ginkens..Farmer Rancher Exchange..(605) 769-0142

Auction streaming:

Watch the Auction Live at: dvauction.com

Real time bidding & proxy bidding available.

Questions contact Justin Dikoff (605) 290-0635

jdikoff@dvauction.com

DVAuction
Broadcasting Real-Time Auctions

Ultrasound Data

The bulls will be ultrasounded and weighed in February by Kama Bruns and sent to the National CUP Lab. The results will be available on our website as we receive them. The reason some of the bulls don't have adjusted data is because they are too young or too old from the 365 day target.

Breeding Guarantee

All bulls are guaranteed breeders. The 18-month-old bulls are fertility tested. It will be the responsibility of the buyer to have the yearling bulls fertility tested before they are turned out with the cows or before 15 months of age. The seller reserves the privilege to prove the bull a breeder. If the bull fails to prove a breeder, the seller will either replace the bull with another of equal quality or give credit to the buyer at the next sale, less any salvage value of the bull. In the event that a bull becomes permanently injured or dies within the first breeding season, if notified promptly, the seller shall allow credit to the buyer of one half the purchase price towards another bull less any salvage value.

Delivery

We are offering free delivery in SD & NE and will assist to other states. It is the responsibility of the buyer to contact the seller to discuss delivery options. At the conclusion of the auction all lots purchased in the auction become the legal property of their respective buyers. No animals will be delivered without payment or arrangements made in advance with the seller. Seller will keep the bulls at no charge for 10 days and \$2.00/head/day after that. The DeJong Ranch is not liable for injuries occurring after the sale date. Arrangements for keeping the bulls longer may be made between buyer and seller, and are at the sole discretion of these two parties.

Breed Average EPD's

	CED	BW	WW	YW	Milk
Maine-Anjou	8	1.7	44	55	19
MainTainer	8	0.9	45	61	17
Simmental	9	2.3	62.5	91.2	23
Angus	6	1.2	56	99	25

DJ Fortress Progeny

Lots 1- 6 & 45

DJ Fortress F802

Polled PB MA Reg #493941

MINN Hard Whiskey
BOE Garth
BOE Ms. Jolene(Suh)
GVC Newt (Suh)
DE B17
Y140 (909Design)



DJ Head Honcho H001

3/13/20 Polled Maine-Anjou Reg #512392

1

Fortress

Ten Carat

DE W169

129 (New Design 878)

%MA	3/4
BW	84
Adj WW	784

CED 4 BW 2.2 WW 56 YW 81 Milk 27 TM 55

CEM 4 CW 18 REA 0.28 MB 0.13 FT -0.03

- * Top 1% TM, Top 4% MK, Top 10% WW & YW
- * Above average on every carcass EPD.
- * Tremendous balance, big top & quarter, great birth to yrkg spread.
- * Sound & good footed.
- * His 11 year dam is the model of Angus maternal strength mixed with Maine carcass and muscle power.

DJ Fort Henry H002

3/17/20 Polled MaineTainer Reg #516547

2

Fortress

Rocky

DE 711

431(Grit)

%MA	1/2
BW	85
Adj WW	765

CED BW 3.2 WW 63 YW 88 Milk 18 TM 50

CEM CW REA 0.31 MB 0.24 FT -0.03

- * Top 3% WW, Top 5% YW, TM, Top 15% MB, FT
- * Smooth, soft, great feet & legs.
- * His commercial Angus dam can be tracked to 9 generations of Angus AI sires that provide functionality and longevity.



DJ X Milliron H003

3/17/20 Polled Maine-Anjou Reg #515834

3

Fortress

Working Man

DE Y151

R151 (High Definition)

%MA	3/4
BW	85
Adj WW	586

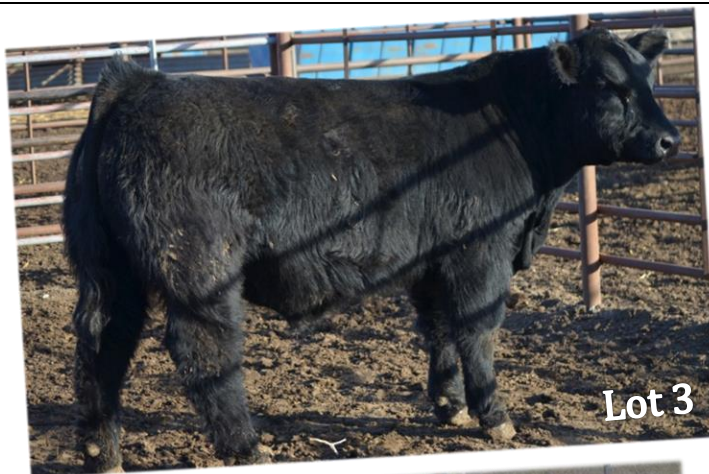
CED 0 BW 3.8 WW 55 YW 68 Milk 22 TM 49

CEM -13 CW 13 REA 0.24 MB 0.10 FT -0.03

* Top 10% TM, Top 15% WW, Top 20% MK

* Style, balance, bone & hair

* His mother combines a lineage of skeletal width, substance of bone, and eye appeal.



Lot 3

DJ X Milliron H006

3/16/20 Horned Maine-Anjou Reg #515835

4

Fortress

Banker

DE D36

B89 (Xhilarator)

%MA	PB
BW	80
Adj WW	597

CED 6 BW 1.8 WW 63 YW 83 Milk 14 TM 45

CEM -5 CW 8 REA 0.21 MB 0.07 FT -0.03

* Top 1% WW, Top 2% YW

* Horned PB bull with great birth to yearling spread.

* His maternal genetics consist of the best phenotypes in our herd including 2 dominating females in the show ring.



Lot 5

DJ X Milliron H008

4/5/20 Polled MaineTainer Reg # 515874

5

Fortress

Iron Mountain

DE 361

603 (Freedom)

%MA	1/2
BW	75
Adj WW	608

CED 3 BW 0.5 WW 65 YW 98 Milk 16 TM 48

CEM 0 CW 21 REA 0.23 MB 0.23 FT -0.02

* Top 2 % WW, YW, Top 10% TM, Top 15% MB

* Youngest bull in the sale.

* Big topped & loaded with meat.

* Generations of proven cow power.

* If the numbers don't convince you, know that his 14 year old granddam is our most consistent Angus producer.



Lot 6

DJ X Milliron H005

3/16/20 Polled MaineTainer Reg # 516497

6

Daddy's Money

Iron Mountain

DE 362

905 (New Edition)

%MA	1/2
BW	85
Adj WW	602

CED 3 BW 2.4 WW 56 YW 82 Milk 26 TM 54

CEM -1 CW REA MB FT

* Top 2% TM, Top 10% WW, YW, MK

* Sound structured Fortress with good rib shape and extension

* Dam is big middled coming from excellent fertility genetics

DJ Enhancer

Polled PB MA Reg #479962

Minn Hard Whiskey
All That Matters

Minn Porsche 109W

Duff Basic Instinct
GVC Tessa 35X

579R(Mr. Blk Smoker)



DJ Enhancer Sons Lots 7-10

Hom. Blk Hom. Pld



Lot 7



Lot 9

**DJ Hard to Forget H013**

2/14/20

Polled

MaineTainer

Reg #515837

7

Enhancer

United

DE E64

64Y (Turk)

%MA 1/2

BW 90

Adj WW 758

CED 4 BW 2.6 WW 60 YW 82 Milk 13 TM 43

CEM -1 CW REA MB FT

* Top 5% WW, Top 10% YW

* The stoutest most massive bull in the offering.

* 1/2 Maine 1/4 Sim 1/4 AN

* His young dam is long, correct and now in the donor pen

DJ X Milliron G951

9/14/19

Polled

MaineTainer

Reg #510154

8

Enhancer

Reprint

DE D67

T19 (Ali)

%MA 5/8

BW 87

Adj WW 557

CED 3 BW 1.9 WW 49 YW 66 Milk 21 TM 45

CEM -5 CW 9 REA 0.18 MB 0.10 FT -0.02

* Fall born with strong maternal genetics

* Balanced across the board.

DJ X Milliron G953

9/4/19

Polled

MaineTainer

Reg #510156

9

Enhancer

Ali

DE U33

601 (Freedom)

%MA 5/8

BW 80

Adj WW 702

CED 9 BW 0.7 WW 70 YW 94 Milk 13 TM 48

CEM -1 CW 4 REA 0.20 MB 0.08 FT -0.02

* Top 1% WW, Top 3% YW, Top 10% TM

* Big, stout & long spined.

* Great combination of low birth to high performance.

DJ Gaining Ground G952

9/16/19

Polled

Maine-Anjou

Reg #510155

10

Enhancer

I Deliver

DE B8

Z10 (Special Delivery)

%MA 3/4

BW 90

Adj WW 471

CED 3 BW 2.1 WW 38 YW 48 Milk 22 TM 41

CEM -7 CW 14 REA 0.20 MB 0.10 FT -0.01

* Top 20% MK

* He had a rough start being orphaned at 3 months

* His name sums it up Gaining Ground.

DJ X Milliron G954

9/4/19 Polled MaineTainer Reg #509413

11

First Impression
Lasting Impression
725T (Statesman)

%MA	1/2
BW	85
Adj WW	616

Reprint
DE D630
64Y (Turk)

CED 8 BW 0.8 WW 54 YW 82 Milk 19 TM 45

CEM -1 CW 15 REA 0.22 MB 0.34 FT -0.01

- * Top 10% YW, Top 15% WW, Top 5% MB
- * 1/2 Maine 1/2 Angus
- * Cow power genetics
- * He comes from a line of smooth made stylish mommas that just flat out produce.



Lot 11

DJ Gentleman G955

9/9/19 Polled MaineTainer Reg #509517

12

Wake Up Call
On Point
X164 (Hard Drive)

%MA	3/8
BW	73
Adj WW	566

Driver
DE Y89
T201 (Freedom)

CED 11 BW -1.3 WW 62 YW 85 Milk 12 TM 43

CEM -4 CW REA MB FT

- * Top 4% WW, Top 10% YW, Top 15% BW
- * Soft middled & smooth made
- * Calving ease combined with exceptional growth.
- * Cow power & udder quality
- * 3/8 Maine 1/4 Sim 3/8 Angus
- * His Sim Angus dam is a never miss producer.
4 calves have grossed \$21,500



D630



Lot 12



Y89

Special Thanks to:

Matt Bogue, Lane Schilling, Adam Rabih,
Zane Gavette and Savannah Vogel for all of
your sale and show prep help.



DJ Fortifier

Polled 3/4 MA Reg # 491886

Minn Hard Whiskey
All That Matters
Minn Porsche (Special Edition)

Duff Basic Instinct
GVC Tessa 35X
579R (Mr Blk Smoker)



DJ Fortifier Progeny Lots 13-16 & 46



DJ Hands Down Ho09 ET

3/5/20 Polled Maine-Anjou Reg #512410

13

Fortifier

Newt

DE B17

Y140 (909 Design)

%MA	3/4
BW	90
Adj WW	596

CED	6	BW	1.4	WW	50	YW	67	Milk	21	TM	46
CEM	-2	CW	10	REA	0.21	MB	0.11	FT	-0.02		

- * Top 25% WW & MK, Top 15% TM
- * Balance & consistency in a moderate package
- * ET by DJ Fortifier (purchased by Lyle Nepodal) who is a full brother to DJ Enhancer (purchased by Nagel Cattle Co.)
- * Lot 13's donor dam is the mother of DJ Fortress.

DJ X Milliron Ho10 ET

3/10/20 Polled Maine-Anjou Reg #515875

14

Fortifier

Newt

DE B17

Y140 (909 Design)

%MA	3/4
BW	94
Adj WW	662

CED	6	BW	1.4	WW	50	YW	67	Milk	21	TM	46
CEM	-2	CW	10	REA	0.21	MB	0.11	FT	-0.02		

- * Top 25% WW & MK Top 15% TM
- * Full sib to Lot 13 with a little more frame and performance.

DJ X Milliron Ho12

3/18/20 Polled MaineTainer Reg # 515836

15

Fortifier

On Point

DE E13

B86 (Xhilarator)

%MA	5/8
BW	84
Adj WW	641

CED	4	BW	1.8	WW	53	YW	73	Milk	15	TM	41
CEM	-6	CW	8	REA	0.19	MB	0.07	FT	-0.01		

- * Top 20% WW & YW
- * Smooth made with excellent birth to yearling spread.
- * Muscle shape and correctness comes naturally.
- * His young dam is clean in her lines with a lot of future.

DJ X Milliron Ho14

3/19/20 Polled MaineTainer Reg # 515838

16

Fortifier

DE Z145

Y26 (Special Delivery)

%MA	1/2
BW	83
Adj WW	571

CED	6	BW	1.1	WW	60	YW	78	Milk	10	TM	40
CEM	-3	CW		REA		MB		FT			

- * Top 5% WW Top 15% YW
- * One of the younger bulls 1/2 MA 1/2 SM 1/4 AN
- * Dam is long spined, easy fleshing and beautiful uddered.



W/C Lock Down

Polled 1/2SM 1/2AN Reg # 2658496

Rem. On Target
Lock N Load
Bar15 Ms Knight 78E

Ironwood New Level
GCF Ms New Level R206
MAF Eileen 0113

DJ Lock Down Sons
Lots 17 & 18

DJ Hakuna Matata H015

2/2/20 Scurred MaineTainer Reg # 515839

17	Lock Down										<div>%MA3/8</div>	
	Stock Broker										<div>BW75</div>	
	DE F9										<div>Adj WW659</div>	
	B9 (I Deliver)											
CED	8	BW	0.5	WW	63	YW	89	Milk	21	TM	53	
CEM	-1	CW	23	REA	.36	MB	.15	FT	-0.02			

- * Top 3% WW, Top 4% YW, Top 2% TM, Top 25% MK
- * 75 lb. BW with exceptional growth out of a 1st calf heifer
- * 3/8 Maine 3/8 Sim 1/4 AN
- * "Hakuna Matata" means no worries and this guy punches that ticket alright.
- * He came easy out of a first time momma that is extremely powerful with outstanding milk production.

GVC Ditto Sons
Lots 19 & 20

DJ Here Comes the Boom

2/27/20 Scurred MaineTainer Reg # 516498

19	Ditto										<div>%MA3/8</div>	
	Secret Weapon										<div>BW80</div>	
	DE E51										<div>Adj WW685</div>	
	Y88 (Salution)											
CED	8	BW	1.8	WW	46	YW	62	Milk	35	TM	58	
CEM	-4	CW	18	REA	.29	MB	.18	FT	-0.02			

- * 3/8/Maine 3/8 Sim 1/4 AN
- * Hom. Black
- * His young donor dam is what we strive to produce.
- * Her structure, bone work, and foot quality are outstanding.

DJ X Milliron H018

2/16/20 Polled MaineTainer Reg # 515841

18	Lock Down										<table><tr><td>%MA</td><td>3/8</td></tr><tr><td>BW</td><td>74</td></tr><tr><td>Adj WW</td><td>459</td></tr></table>		%MA	3/8	BW	74	Adj WW	459		
	%MA	3/8																		
	BW	74																		
	Adj WW	459																		
	I-80																			
DE F14																				
D139 (Resource)																				
CED	6	BW	0.3	WW	62	YW	92	Milk	20	TM	51									
CEM												-2	CW		REA		MB		FT	

- * Top 4% WW, Top 3% YW, Top 4% TM
- * 74 lb. BW out of a 1st calf heifer
- * Moderate, soft, BWF

GVC Ditto

Polled 1/2MA Reg # 432140

GVC Statesman 4R
GVC Suh
Ms. GV 535R

Connealy 044
GVC 87U
Ms. GV 621S

DJ X Milliron H017

3/22/20 Polled MaineTainer Reg # 515840

20	Ditto																
	I Deliver																
	DE C503																
	A24 (Hourglass)																
	<table><tr><td>%MA</td><td>1/2</td></tr><tr><td>BW</td><td>93</td></tr><tr><td>Adj WW</td><td>515</td></tr></table>												%MA	1/2	BW	93	Adj WW
%MA	1/2																
BW	93																
Adj WW	515																
CED	4	BW	2.3	WW	53	YW	76	Milk	26	TM	53						
		CEM	-4	CW	20	REA	0.25	MB	0.18	FT	-0.01						

- * Top 5% MK, Top 2% TM, Top 15% YW, Top 20% WW
- * Double bred 1/2 Maine.
- * He contains some of the best maternal genetics we have used.

DLDJ Dinero

Polled 3/4 MA Reg # 474186

Webr Striker
AFR Banker
Bsma HeatherRsec Highliner
Dldj High Class X13
Ms. GV 537RDinero Sons
Lots 21 & 22**DJ X Milliron H020**

3/30/20 Polled MaineTainer Reg # 515843

21

Dinero

Priority

DE B52

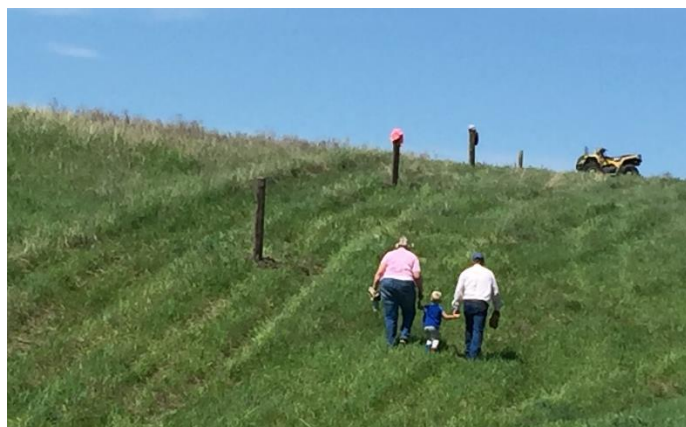
Y152 (Working Man)

%MA	1/2
BW	90
Adj WW	704

CED 2 BW 2.3 WW 61 YW 83 Milk 15 TM 46

CEM -4 CW 11 REA 0.25 MB 0.15 FT -0.02

- * Top 5% WW, Top 10% YW, Top 15% TM
- * Should be one of the bigger framed bulls in the offering.
- * Dam is bigger framed, long sided- sired by SAV Priority.

**DJ X Milliron H019**

3/23/20 Polled MaineTainer Reg # 515842

22

Dinero

Wake Up Call

DE Z23

W3 (Ali)

%MA	5/8
BW	93
Adj WW	581

CED 6 BW 2 WW 55 YW 72 Milk 12 TM 40

CEM -2 CW 3 REA 0.2 MB 0.10 FT -0.03

- * Top 15% WW Top 20% YW
- * Dam is moderate and deep, that produces with consistency.

DJ X Milliron H028

3/2/20 Polled MaineTainer Reg #516500

23

SAV Brilliance

Insight

PVF 790 (New Horizon)

Xhilarator

DE A32

W32 (Special Delivery)

%MA	1/2
BW	87
Adj WW	604

CED 7 BW 0.4 WW 64 YW 100 Milk 21 TM 54

CEM 0 CW REA MB FT

- * Top 3% WW, Top 2% YW & TM * Flush brother to lot 44.
- * ET with exceptional birth to yearling spread.
- * His PB dam produces design, power and excellence.

DJ X Milliron H027

3/14/20 Scurred MaineTainer Reg #515848

24

Silveiras Style 9303

Hybrid

JSC 5S(Irish Whiskey)

Real World

DE C27

W158 (Salution)

%MA	1/2
BW	90
Adj WW	695

CED 9 BW 2 WW 41 YW 61 Milk 25 TM 46

CEM 3 CW 14 REA 0.33 MB 0.15 FT -0.3

- * Top 10% MK, Top 15% TM, Top 20% CED
- * Deep & soggy 1/2 Maine 1/8 Sim 3/8 Angus

Data Bank 1311C

Polled PB MA Reg #464046

GVC Statesman 4R

BBNX2 201X

Boss Beauty 84M

SLC Sooner 101M

BNWZ Calypso 28Y

DLB Miss Whiskey



Data Bank Sons Lots 25-27



DJ X Milliron H021

2/15/20 Horned Maine-Anjou Reg # 515844

25

Data Bank

I-80

DE F18

D54 (First Impression)

%MA	PB
BW	83
Adj WW	521

CEM 12 BW 0.7 WW 43 YW 54 Milk 22 TM 44

CEM 2 CW 9 REA 0.27 MB 0.06 FT -0.3

- * Some of the most popular Maine genetics
- * Solid performance out of a 1st calf heifer
- * His young dam goes back to 35X coupled with sires to bring out style.

DJ X Milliron H022

2/1/20 Polled Maine-Anjou Reg # 515845

26

Data Bank

I Deliver

DE F23

D96 (Wake Up Call)

%MA	PB
BW	60
Adj WW	509

CEM 7 BW -2 WW 45 YW 62 Milk 24 TM 46

CEM -1 CW 14 REA 0.24 MB 0.12 FT -0.2

- * Top 1% BW, Top 15% MK, Top 20% TM
- * 60 lb. BW out of a 1st calf heifer.
- * We couldn't write up a better maternal pedigree here.

PHJ H020

3/17/20 Polled MaineTainer Reg # Pending

27

Data Bank

All That Matters

DE Echo

35X (Basic Instinct)

%MA	PB
BW	75
Adj WW	600

CEM BW 0.8 WW 50 YW 65 Milk 20 TM 44

CEM CW REA MB FT

- * Light birth weight embryo transplant.
- * Style & balance with a proven pedigree.



My mind is like a web browser. 19 tabs are open, 3 are frozen and I have no idea where the music is coming from.

May We All Sons Lots 28-30



Lot 28

May We All 6D

Hom. Blk Polled 1/2 MA Reg #472785

GOET Iso
Daddys Money
JSC Velvet 112W
Irish Whiskey
MAC Shelby 302A



DJ X Milliron H024

2/14/20 Polled MaineTainer Reg #515847

28

May We All

Slider

DE F46

D18 (On Point)

%MA	3/8
BW	65
Adj WW	557

CED	14	BW	-3.8	WW	45	YW	65	Milk	16	TM	39
-----	----	----	------	----	----	----	----	------	----	----	----

CEM	7	CW	10	REA	0.18	MB	0.1	FT	-0.02
-----	---	----	----	-----	------	----	-----	----	-------

- * Top 1% BW, Top 3% CED
- * Calving ease deluxe for multiple generations.
- * Angus sired Dam is a Maine Angus first calf heifer.

DJ X Milliron H023

2/7/20 Polled MaineTainer Reg #515846

29

May We All

Lock Down

DE F7

D59 (Daddy's Money)

%MA	3/8
BW	78
Adj WW	576

CED	12	BW	-1.5	WW	52	YW	73	Milk	18	TM	44
-----	----	----	------	----	----	----	----	------	----	----	----

CEM	3	CW		REA		MB		FT	
-----	---	----	--	-----	--	----	--	----	--

- * Top 10% BW, Top 15% CED, Top 20% WW & YW
- * Black Baldy recommended for heifers.
- * Fluffy (F7) has beautiful rib shape, stunning lines and the Genetic equivalent to Lot 17.



Lot 30

DJ Kylee's Hunk H026

2/17/20 Polled MaineTainer Reg #516499

30

May We All

Ante Up

DE F103

B114 (Hourglass)

%MA	5/8
BW	86
Adj WW	517

CED	12	BW	-2.1	WW	39	YW	54	Milk	18	TM	38
-----	----	----	------	----	----	----	----	------	----	----	----

CEM	5	CW	8	REA	0.11	MB	0.07	FT	-0.01
-----	---	----	---	-----	------	----	------	----	-------

- * Top 5% BW, Top 10% CEM, Top 15% CED
- * Another stylish MWA out of a 1st calf heifer.
- * 5/8 Maine 5/16 Angus 1/16 Sim with a great disposition.

Huck

1/29/20 Polled Maine-Anjou Reg # 514362

31

Daddy's Money

Common Ground

DJ Flicka F821

019Z (Final Product)

%MA	3/4
BW	60
Adj WW	705

CED	9	BW	-0.5	WW	45	YW	58	Milk	9	TM	30
-----	---	----	------	----	----	----	----	------	---	----	----

CEM	1	CW		REA		MB		FT	
-----	---	----	--	-----	--	----	--	----	--

- * Fast growing, muscular with great eye appeal.
- * Out of a heavy milking first calf heifer.

PHJ H035

3/21/20 Polled SimAngus Reg # NA

32

HTP/SVF Duracell
 Lover Boy
 Built Right Dam
 Dream On
 PHJ Y74
 SM X AN

%SM	3/4
BW	85
Adj WW	675

CED na BW na WW na YW na Milk na TM na

* Stout, correct and free moving.

* Commercial 3/4 Sim 1/4 AN

PHJ H029

3/20/20 Polled SimAngus Reg # NA

33

Triple C Singletary
 Cowboy Cut
 In Dew Time Dam
 Lookout
 PHJ 305
 9609(Stockman 365)

%SM	1/2
BW	85
Adj WW	650

CED na BW na WW na YW na Milk na TM na

* Long spined with good volume.

* Commercial 1/2 Sim 1/2 AN



PHJ H018

3/17/20 Polled SimAngus Reg # NA

34

Brilliance
 Insight
 New Horizon Dam
 Tuxedo
 PHJ W8
 SM X AN

%SM	1/4
BW	80
Adj WW	635

CED na BW na WW na YW na Milk na TM na

* Long and smooth.

* Commercial 1/4 Sim x 3/4 Ang.

Sim Angus Bulls
 Lots 32-34



Special Thanks to:

Winner Animal Clinic- Dr. Vogeli, Dr. Heath,
 Dr. Covey, Dr. Laura, Dr. Miller and all the
 staff for working on herd health.



Angus Bulls

Ab. Advantage Progeny
Lots 35-40 & 48

RB Absolute Advantage

Reg # 18089331

SAV Final Answer

KCF Bennett Absolute

Thomas Miss Lucy 5152

Werner War Party 2417

RB Lady Party 167-305

BA Lady 6807 305



Lot 35

VZA 011

3/01/20

Polled

Angus

Reg #19891870

35

Absolute Advantage

Insight

VZA 570

803 (Freedom)

%AN	PB
BW	85
Adj WW	779

CED	5	BW	1.9	WW	72	YW	132	Milk	33
-----	---	----	-----	----	----	----	-----	------	----

CEM	3	CW	63	\$B	154	\$C	254	\$W	84	REA	1.09
-----	---	----	----	-----	-----	-----	-----	-----	----	-----	------

* Top 10% in WW, YW, Milk, CW

* Standout from birth

* Out of a never miss Donor Dam

Special Thanks to:

Kenny Hamer, Lindsey Johnson, Mark Reindl
Dakotaland Feeds for help with the cattle rations and
the Ribeye meal on sale day.



VZA 012

2/29/20

Polled

Angus

Reg #19891878

36

Absolute Advantage

Insight

VZA 570

803 (Freedom)

%AN	PB
BW	84
Adj WW	610

CED	5	BW	1.9	WW	72	YW	132	Milk	33
-----	---	----	-----	----	----	----	-----	------	----

CEM	3	CW	63	\$B	154	\$C	254	\$W	84	REA	1.09
-----	---	----	----	-----	-----	-----	-----	-----	----	-----	------

* Top 10% in WW, YW, Milk, CW

* Flush brother to Lot 35 and 48.

VZA 013

3/21/20

Polled

Angus

Reg #19586005

37

Absolute Advantage

Really Windy

123

9234 (Lead On)

%AN	PB
BW	80
Adj WW	691

CED	9	BW	0.7	WW	59	YW	108	Milk	31
-----	---	----	-----	----	----	----	-----	------	----

CEM	9	CW	46	\$B	0.74	\$C	140	#W	235	REA	66
-----	---	----	----	-----	------	-----	-----	----	-----	-----	----

* Deep bodied and easy on the move.

* Backed by strong maternal genetics & recommended for heifers.



VZA 014

3/25/20 Polled Angus Reg #19866623

38

Absolute Advantage

Lincoln
VZA 206

238 (Really Windy)

%AN	PB
BW	84
Adj WW	650

CED	7	BW	1	WW	66	YW	116	Milk	29		
CEM	8	CW	50	\$B	0.73	\$C	139	\$W	235	REA	73

* Extra length of body out of a top producing dam.

* Full brother sold to the Nepadol family in 2020 sale.

VZA 015

3/16/20 Polled Angus Reg # 19866625

39

Absolute Advantage

Final Product
VZA 303

6219 (Maker)

%AN	PB
BW	73
Adj WW	695

CED	6	BW	1.0	WW	63	YW	114	Milk	32		
CEM	10	CW		\$B		\$C		\$W	68	REA	

* Heifer bull deluxe.

* Should sire pounds heavy calves.

VZA 970

9/1/19 Polled Angus Reg # 19953500

40

Absolute Advantage

Resource
VZA 401

123 (Really Windy)

%AN	PB
BW	80
Adj WW	600

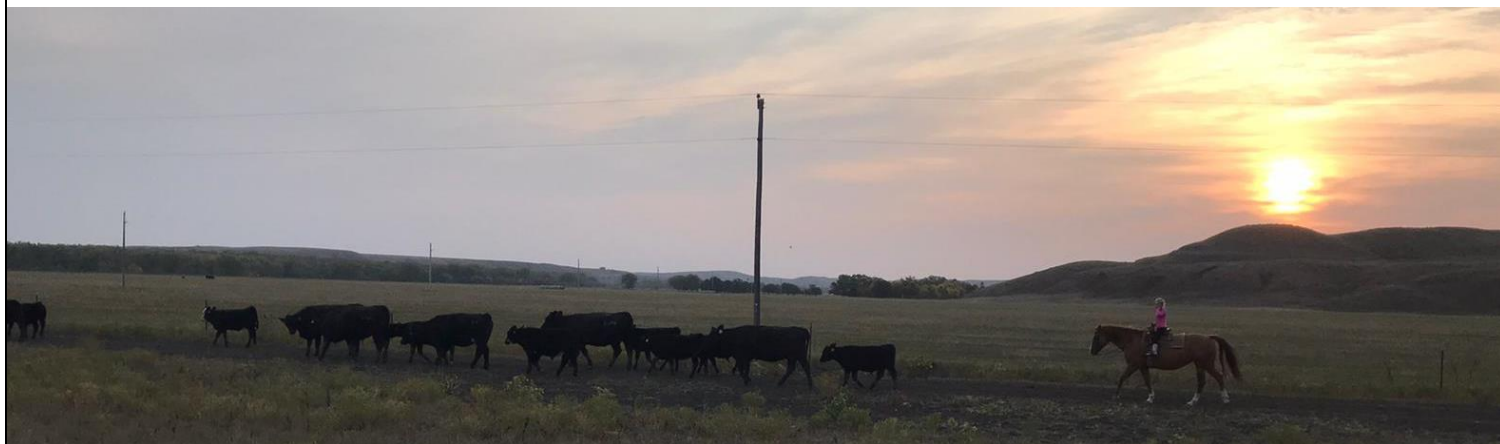
CED	8	BW	1.5	WW	66	YW	122	Milk	28		
CEM	4	CW	54	\$B	138	\$C	233	\$W	69	REA	.97

* Great birth to weaning spread.

* Full brother to high selling Angus bull and heifer in 2019 sale.

* His donor dam is a consistent producer of great bulls and females.

* Recommended for heifers.





Lot 41



Lot 42



MB G903 Governor

9/3/19

Polled

Angus

Reg # 19788593

41

Bruiser

VZA Ezra

305 (Eagle Eye)

Doc

5260

7061T(New Day 359N)

%AN	PB
BW	75
Adj WW	645

CED 6 BW 1.4 WW 49 YW 90 Milk 25

CEM 9 CW \$B \$C \$W REA

- * Calving ease with style
- * Clean fronted and deep bodied
- * These fall bulls are ready for heavy service.

VZA 016

2/19/20

Polled

Angus

Reg #Pending

42

Final Answer

Right Answer

HD0C 262

Insight

VZA 805

501 (Resource)

%AN	PB
BW	80
Adj WW	615

CED BW WW YW Milk

- * Generations of cow power behind this bull.
- * Born unassisted out of a first calf heifer.

VZA 017

4/1/20

Polled

Angus

Reg #NA

43

Insight

VZA Frank

VZA 210

AN

VZA 535

AN (AN)

%AN	PB
BW	80
Adj WW	562

CED na BW na WW na YW na Milk na

- * One of the youngest bulls in the sale
- * First calf crop out of Frank this year did not disappoint.



VZA Frank

Elite Open Heifers

DJ Haven H7 ET

3/2/20 Polled MaineTainer Reg #516505

44

Brilliance
Insight
790 (New Horizon)
Xhilarator
DE A32
W32 (Special Delivery)

%MA	1/2
BW	82
Adj WW	628

CED	7	BW	0.4	WW	64	YW	100	Milk	22	TM	54
CEM	0	CW		REA		MB		FT			

- * Top 2% YW & TM, Top 3% WW, Top 25% MK
- * Maine Angus with an incredible combination of femininity, great rib shape and extra power in her stifle.
- * Gentle and has been shown!



DJ Helen H6

4/4/20 Polled Maine-Anjou Reg #512390

45

Garth
Fortress
B17 (Newt)
I Deliver
DE C13
3037 (AN)

%MA	3/4
BW	75
Adj WW	643

CED	6	BW	0.9	WW	55	YW	76	Milk	19	TM	47
CEM	0	CW		REA		MB		FT			

- * Balanced EPD's across the board Top 15% WW, YW & TM
- * Great combination of power and muscle in a smooth feminine package.
- * Dam is moderate with outstanding udder quality.
- * No holes. Sweet disposition and has been shown.
- * DJ Fortress did not disappoint on his first calf crop.



DJ Hope H17 ET

3/5/20 Polled Maine-Anjou Reg #512409

46

All That Matters
Fortifier
35X (Basic Instinct)
Newt
DE B17
Y140 (909 Design)

%MA	3/4
BW	81
Adj WW	555

CED	6	BW	1.3	WW	50	YW	67	Milk	21	TM	46
CEM	-2	CW	10	REA	0.21	MB	0.11	FT	-0.02		

- * Above average on nearly every EPD trait.
- * High Maine tremendously soft middled and easy fleshing.
- * Proven powerful genetics top and bottom, and has been shown.



* Flush sib to lots 13 & 14. Maternal sister to DJ Fortress.



DJ Hip Hop H31

5/5/20

Polled

MaineTainer

Reg #517013

47

Garth

DJ F805

29A (Settler)

Garth

DE E31

B51 (Priority)

%MA	5/8
BW	69
Adj WW	518

CED	-2	BW	2.1	WW	56	YW	76	Milk	23	TM	51
-----	----	----	-----	----	----	----	----	------	----	----	----

CEM	-12	CW	23	REA	0.3	MB	0.12	FT	-0.02
-----	-----	----	----	-----	-----	----	------	----	-------

* Balanced EPD's Top 4% TM Top 10% WW Top 15% TW, MK

* Here is a real potential with a big future.

* Line bred Garth with femininity and pizzazz.

* Incredible HAIR with a splash of white to set her apart.

* Green broke.



VZA 010

3/2/20

Polled

Angus

Reg #19891754

48

Bennett Absolute

Absolute Advantage

RB Lady Party 167-305

Insight

VZA 570

803 (Freedom)

%AN	PB
BW	75
Adj WW	701

CED	5	BW	1.9	WW	75	YW	132	Milk	33	CEM	9
-----	---	----	-----	----	----	----	-----	------	----	-----	---

CW	63	\$B	154	\$C	254	\$W	84	REA	1.09
----	----	-----	-----	-----	-----	-----	----	-----	------

* 13 top 20% scores in EPD's and \$ Values.

* Backed with generations of phenotypically and genetically superior Angus donors that flat out produce!

* Flush sib to lots 35 & 36



Commercial Open Heifers

These commercial heifers have all been selected for uniformity and production potential. They are freeze branded and sired by bulls that have a balance of birth to yearling spread, offer maternal traits while excelling in carcass quality.

We trust these sires to clean up on our entire herd and have confidence in the ability of these heifers to go on and bring value to your operation.

Group 1- Lot 49

ID	Sire	Dam	BD	BW	Adj. WW
H011	Frank	RK1	3/16	70	563
H012	MA x AN	RK14	3/20	66	544
H013	MA x AN	RK15	3/25	75	551
H014	Frank	RK35	3/22	80	501
H015	MA x AN	RK99	4/26	70	656

Group 2- Lot 50

ID	Sire	Dam	BD	BW	Adj. WW
H016	MA x AN	B24	4/3	75	532
H017	MA x AN	D132	4/27	70	537
H018	MA x AN	D66	3/15	72	500
H019	MA x AN	719	3/27	70	510
H020	MA x AN	B44	4/5	74	520

Bred Heifers

We used light birthweight Data Bank and May We All sons on these bred heifers.

All of these females are backed by sound, functional, and productive mommas.

These breds are easy keeping, moderate heifers raised in the rugged hills of the picture below.

Selling in 2 groups of 3 and 2 groups of 2.

Lot	ID	Sire	Dam	Dam's Sire	G. Dam's Sire	%MA	Reg. #	DB
51	G17	All That Matters	C151	Ditto	Hard Drive	3/4	508326	6/11
	G40	I-80	W162	Special Delivery	M131	3/4	508345	6/3
	G45	NAGE Garth	A45	Xceed	RSVP	3/4	508348	5/28
52	G4	Treasure	C504	I Deliver	Xhilarator	1/2	508420	7/3
	G39	I-80	E21	Reprint	Working Man Son	3/4	508344	6/27
	G73	Reprint	C533	Unwound	Ali	5/8	510028	7/3
53	G2	Denver	D21	I Deliver	Statesman	PB	508314	6/27
	G16	Data Bank	D85	Unwound	Settler	3/4	508325	7/1
54	G58	Extra Force	D11	On Point	Closing Bell	3/4	508352	7/26
	G86	Banker Son	E107	On Point	Hard Core	3/4		7/16





Miles & Kim DeJong
31842 DeJong Rd
Kennebec, SD 57544



If you're in the hunt for some high quality cattle and good food, head to the DeJong Ranch 53rd Golden Plus Sale.